



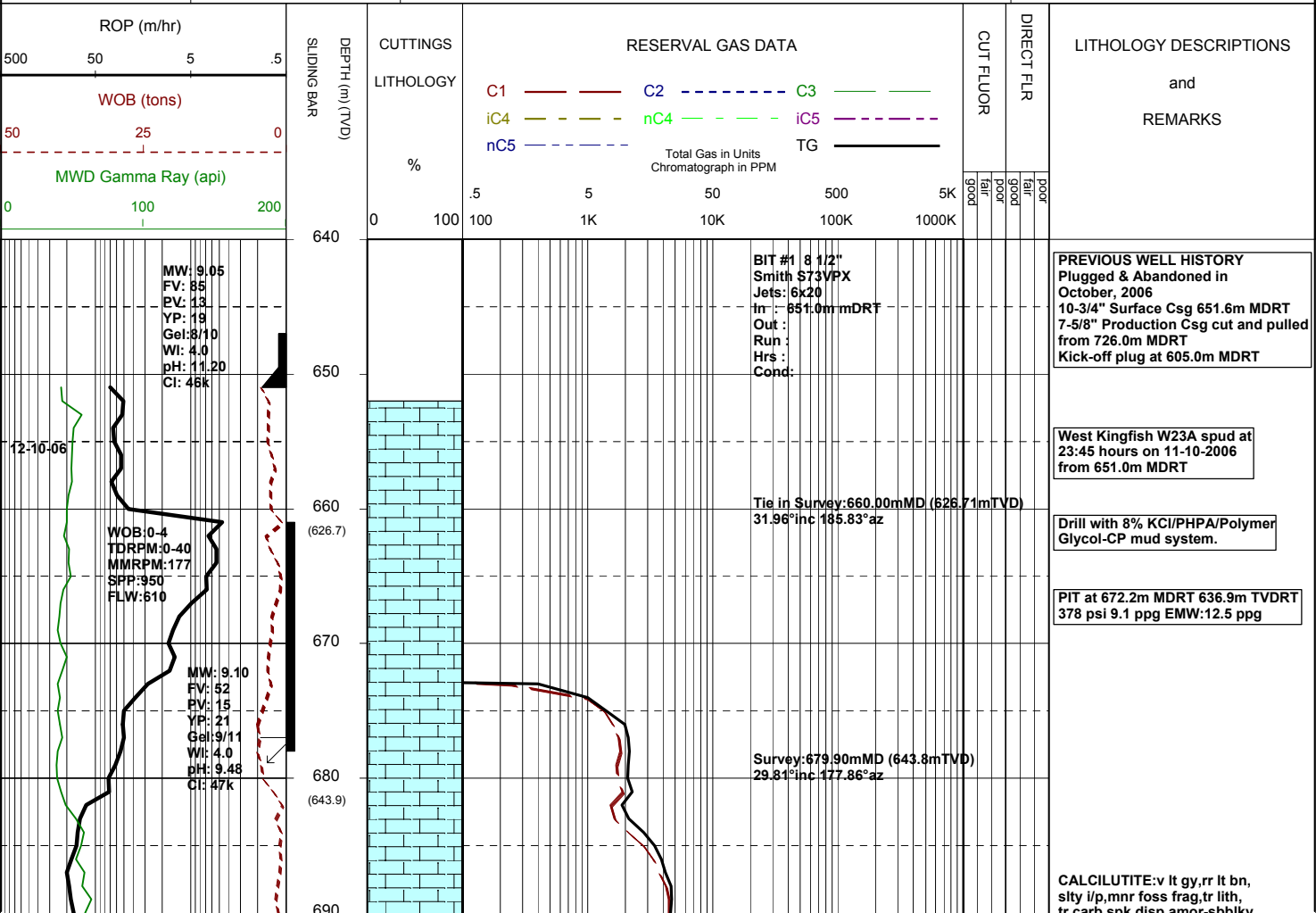
MASTERLOG

WKF-W23A

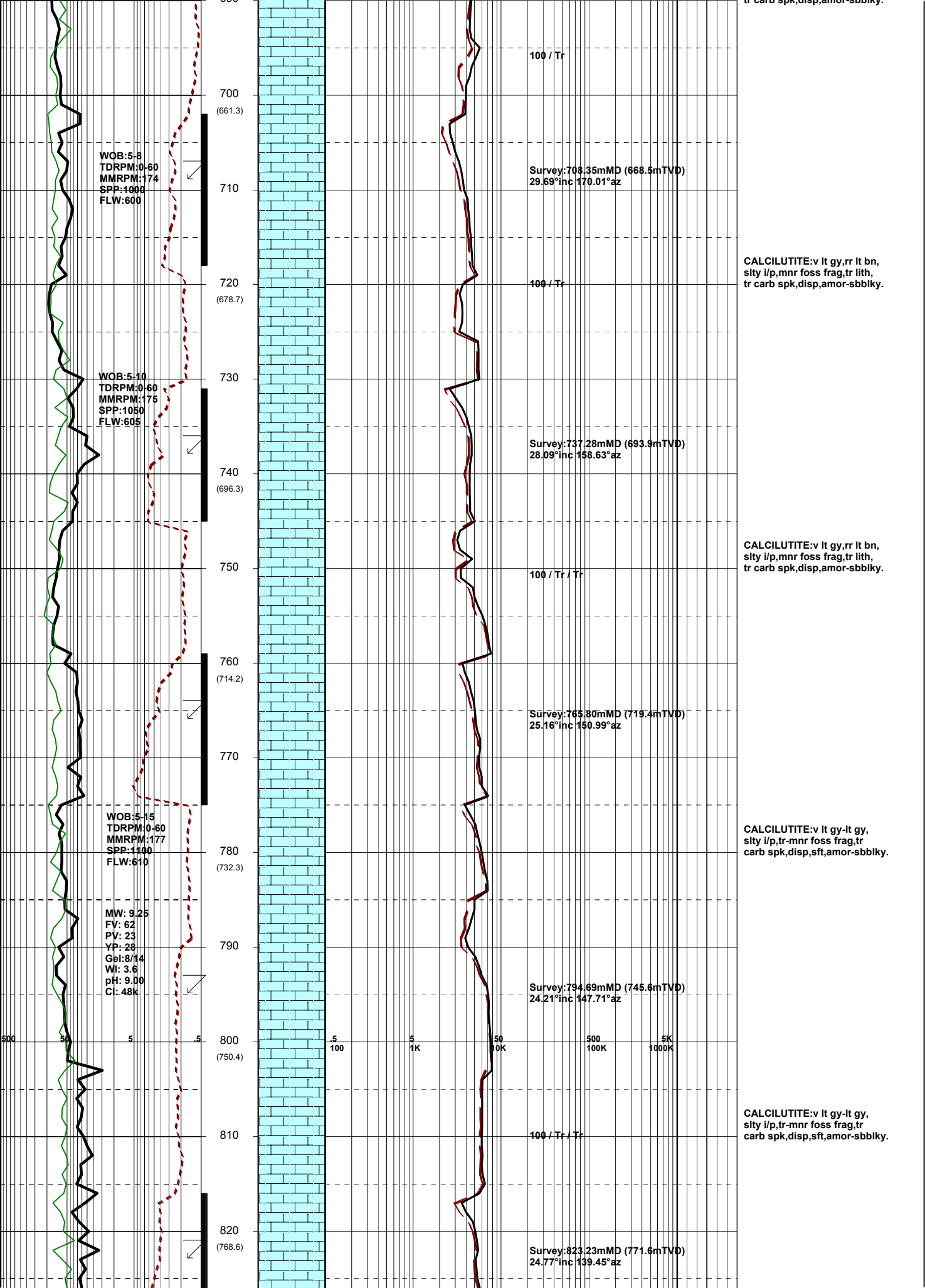


GENERAL	SURFACE POSITON	HOLE / CASING INFO	DATE / DEPTH	ENGINEERS
Country : AUSTRALIA	Longitude : 148 06 19.670E	8-1/2" Hole to	Spud Date : 11-10-2006	Steve Oades
Permit : VIC L7	Latitude : 38 35 34.842S		Total Depth Date :	Mark Smith
Field : Kingfish	MGA Co-ord X : 596271.36mE	10-3/4" Csg Shoe at 651.6m MDRT	Total Depth :	Noel Elliott
Basin : GIPPSLAND	MGA Co-ord Y : 5727806.41mN	7" Production Csg at	True Vertical Depth :	
Well Type : DEVELOPMENT	RT to MSL : 33.43m		Log Scale : 1/ 500	
Rig Name : NABORS 453	RT to Sea Bed : 109.56m			

ABBREVIATIONS	LITHOLOGY LEGEND	ENGINEERING LEGEND
MW Mud Weight FV Funnel Viscosity PV Plastic Viscosity YP Yield Point Gel Gel Strength WL Water Loss KCl Potassium Chloride Cl Chlorides Incl Inclination Az Azimuth	WOB Weight on Bit (klbs) RPM Rotations Per Min FLW Flow Rate (gpm) SPP Pump Pressure (psi) RR Re-Run Bit TG Trip Gas CG Connection Gas BG Background Gas DGP Drilled Gas Peak MM Mud Motor	CASING SHOE LINER HANGER BIT CHANGE DEVI. SURVEY SWC UNRECOV SIDEWALL CORE CORE WIRELINE LOGS MDT POINTS: PRESSURE ONLY SAMPLE SEAL FAILURE TIGHT SLIDING
	CLAYSTONE SILTSTONE SANDSTONE SHALE CONGLOMERATE COAL MARL LIMESTONE DOLOMITE CHERT BRYOZOA RADIOLARITES ECHINOIDS CORALS FORAMINIFERA LITHIC FRAGMENT CARB FRAGMENT QUARTZITE INTRUSIVES GLAUCONITE PYRITE CEMENT	



CALCULITE: v lt gy, rr lt bn, sily i/p, mnr foss frag, tr lith, tr carb snk disp amor-sbhlky



WOB:5-10
TDRPM:0-60
MMRPM:177
SPP:1100
FLW:610

830
840
(786.7)

100 / Tr / Tr

CALCILUTITE:v lt gy-lt gy,
silty i/p,tr-mnr foss frag,tr
carb spk,disp,sft,amor-sbbkly.

850
860
(804.8)

Survey:851.78mMD (797.4mTVD)
25.91°inc 133.82°az

100 / Tr / Tr

CALCILUTITE:v lt gy-lt gy,
silty i/p,tr-mnr foss frag,tr
carb spk,disp,sft,amor-sbbkly.

880
890
(822.7)

Survey:880.66mMD (823.3mTVD)
26.39°inc 128.65°az

100 / Tr / Tr

CALCILUTITE:v lt gy-lt gy,
silty i/p,tr-mnr foss frag,tr
carb spk,disp,sft,amor-sbbkly.

WOB:10-25
TDRPM:0-60
MMRPM:180
SPP:1200
FLW:620

900
910
(840.6)

Survey:909.36mMD (849.0mTVD)
27.14°inc 120.85°az

100 / Tr / Tr

CALCILUTITE:v lt gy-lt gy,
silty i/p,tr-mnr foss frag,tr
carb spk,disp,sft,amor-sbbkly.

MW: 9.25
FV: 74
PV: 21
YP: 31
Gel: 9/16
Wl: 3.6
pH: 8.90
Cl: 48k

920
930
(858.4)

Survey:937.91mMD (874.3mTVD)
28.19°inc 111.55°az

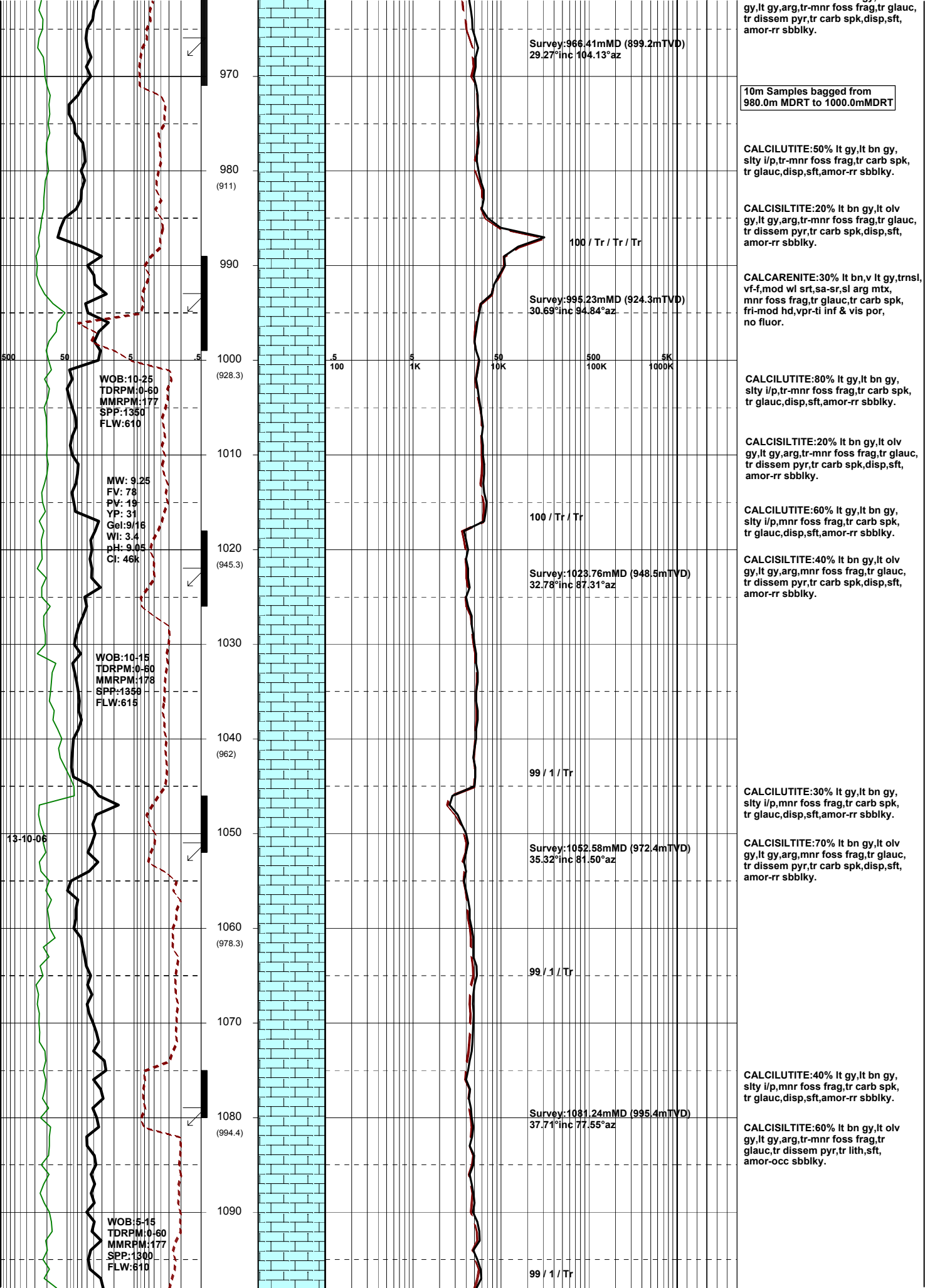
100 / Tr / Tr

CALCILUTITE:90% lt gy,lt bn gy,
silty i/p,tr-mnr foss frag,tr carb spk,
tr glauc,disp,sft,amor-rr sbbkly.

WOB:10-15
TDRPM:0-60
MMRPM:178
SPP:1300
FLW:615

940
950
960
(876.1)
(893.6)

CALCISILTITE:10% lt bn gy,lt oh



Survey: 966.41mMD (899.2mTVD)
29.27°inc 104.13°az

gy,lt gy,arg,lr-mnr foss frag,lr glauc,
tr dissem pyr,lr carb spk,disp,sft,
amor-rr sbbiky.

10m Samples bagged from
980.0m MDRT to 1000.0mMDRT

CALCILUTITE:50% lt gy,lt bn gy,
sfty i/p,lr-mnr foss frag,lr carb spk,
tr glauc,disp,sft,amor-rr sbbiky.

CALCISILTITE:20% lt bn gy,lt olv
gy,lt gy,arg,lr-mnr foss frag,lr glauc,
tr dissem pyr,lr carb spk,disp,sft,
amor-rr sbbiky.

CALCARENITE:30% lt bn,v lt gy,transl,
vf-f,mod wl srt,sa-sr,sl arg mtz,
mnr foss frag,lr glauc,lr carb spk,
fri-mod hd,vpr-ti inf & vis por,
no fluor.

CALCILUTITE:80% lt gy,lt bn gy,
sfty i/p,lr-mnr foss frag,lr carb spk,
tr glauc,disp,sft,amor-rr sbbiky.

CALCISILTITE:20% lt bn gy,lt olv
gy,lt gy,arg,lr-mnr foss frag,lr glauc,
tr dissem pyr,lr carb spk,disp,sft,
amor-rr sbbiky.

CALCILUTITE:60% lt gy,lt bn gy,
sfty i/p,mnr foss frag,lr carb spk,
tr glauc,disp,sft,amor-rr sbbiky.

CALCISILTITE:40% lt bn gy,lt olv
gy,lt gy,arg,mnr foss frag,lr glauc,
tr dissem pyr,lr carb spk,disp,sft,
amor-rr sbbiky.

CALCILUTITE:30% lt gy,lt bn gy,
sfty i/p,mnr foss frag,lr carb spk,
tr glauc,disp,sft,amor-rr sbbiky.

CALCISILTITE:70% lt bn gy,lt olv
gy,lt gy,arg,mnr foss frag,lr glauc,
tr dissem pyr,lr carb spk,disp,sft,
amor-rr sbbiky.

CALCILUTITE:40% lt gy,lt bn gy,
sfty i/p,mnr foss frag,lr carb spk,
tr glauc,disp,sft,amor-rr sbbiky.

CALCISILTITE:60% lt bn gy,lt olv
gy,lt gy,arg,lr-mnr foss frag,lr
glauc,lr dissem pyr,lr lith,sft,
amor-occ sbbiky.

WOB:10-25
TDRPM:0-50
MMRPM:177
SPP:1350
FLW:610

MW: 9.25
FV: 78
PV: 19
YP: 31
Gel:9/16
WI: 3.4
pH: 9.05
Cl: 46k

WOB:10-15
TDRPM:0-80
MMRPM:178
SPP:1358
FLW:615

WOB:5-15
TDRPM:0-60
MMRPM:177
SPP:1300
FLW:610

100 / Tr / Tr / Tr

100 / Tr / Tr

99 / 1 / Tr

99 / 1 / Tr

99 / 1 / Tr

500 50 5 5

5 5 50 500 5K 100 1K 10K 100K 1000K

13-10-06

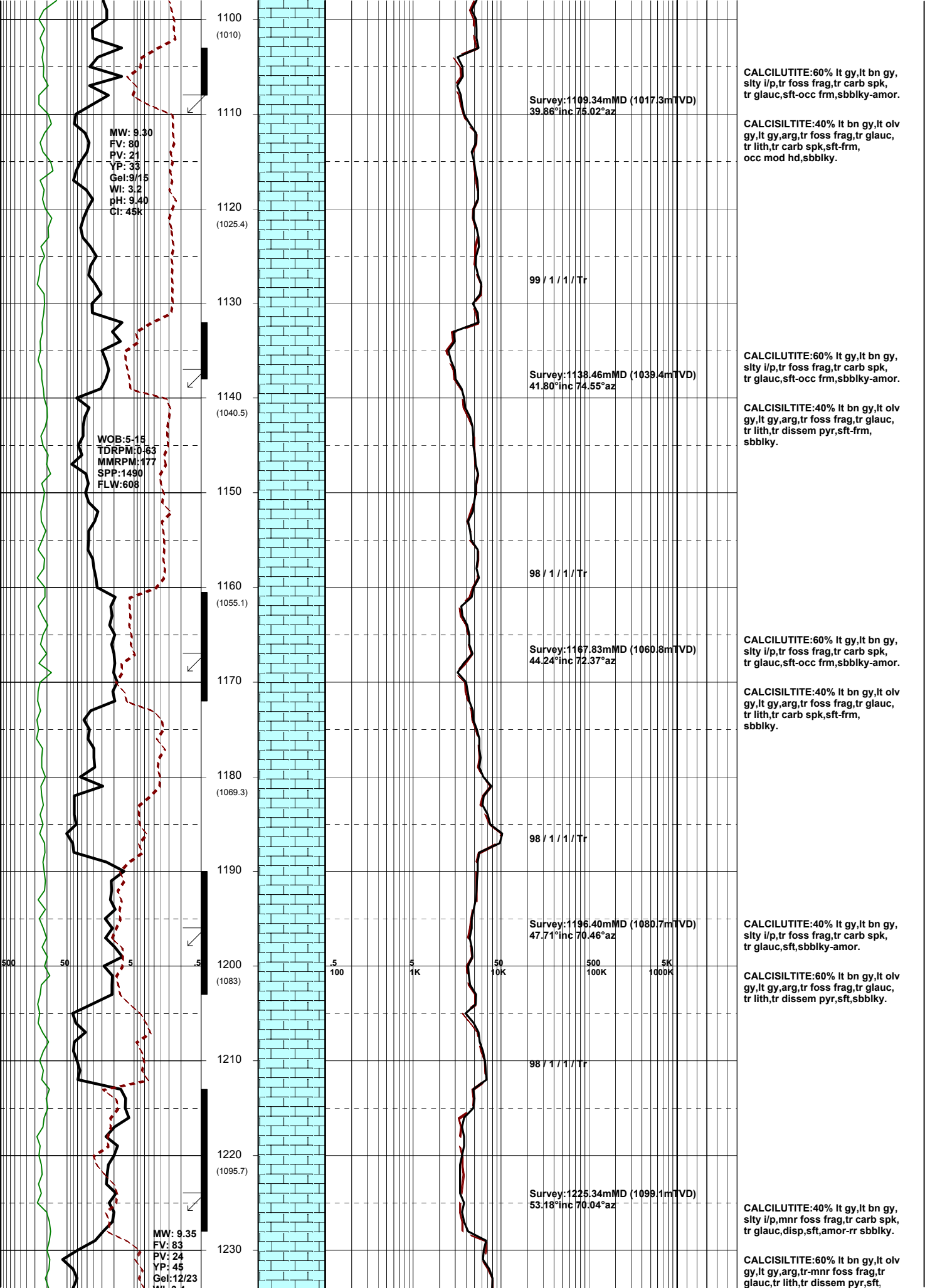
970
980 (911)
990
1000 (928.3)
1010
1020 (945.3)
1030
1040 (962)
1050
1060 (978.3)
1070
1080 (994.4)
1090

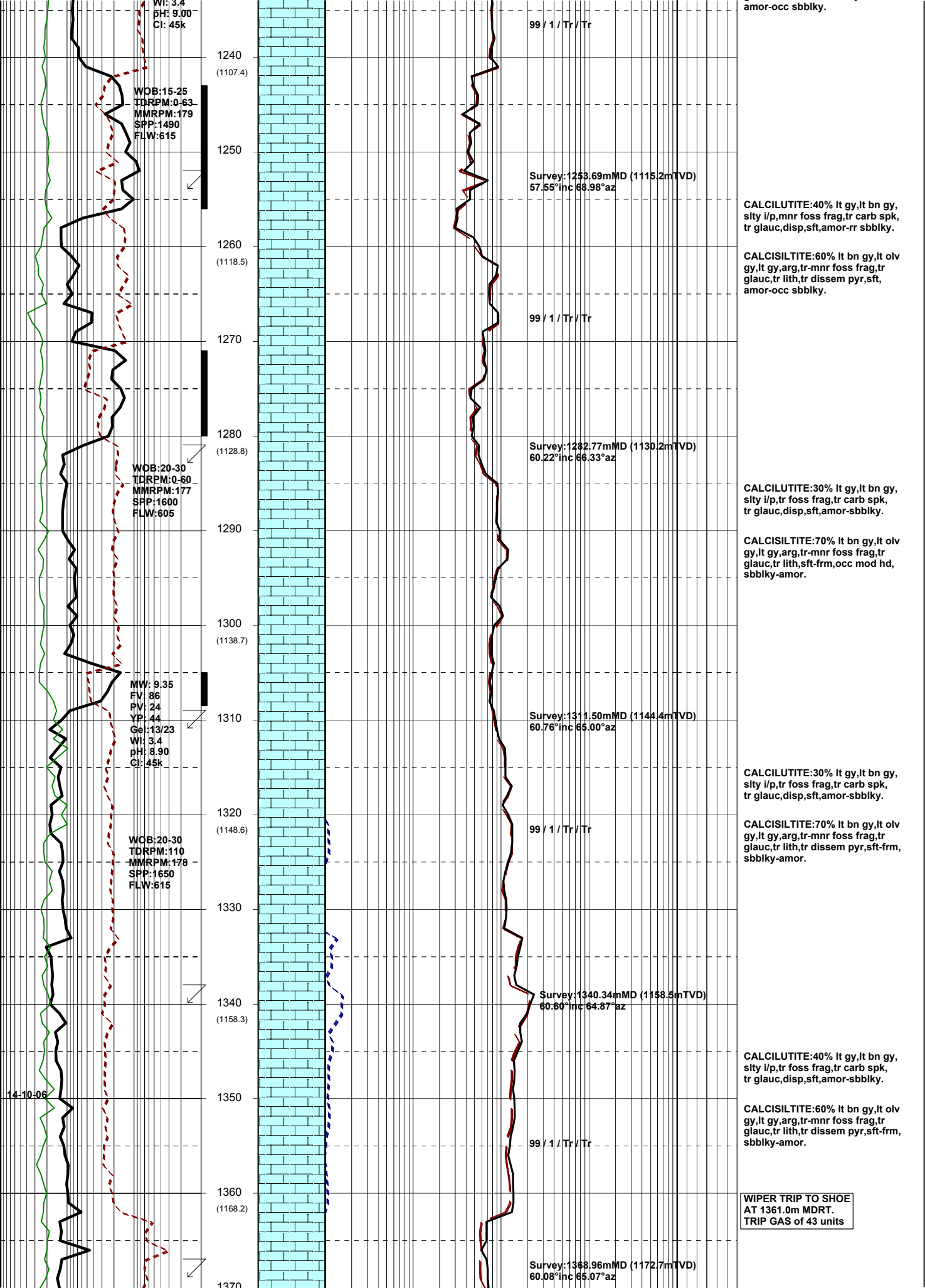
Survey: 995.23mMD (924.3mTVD)
30.69°inc 94.84°az

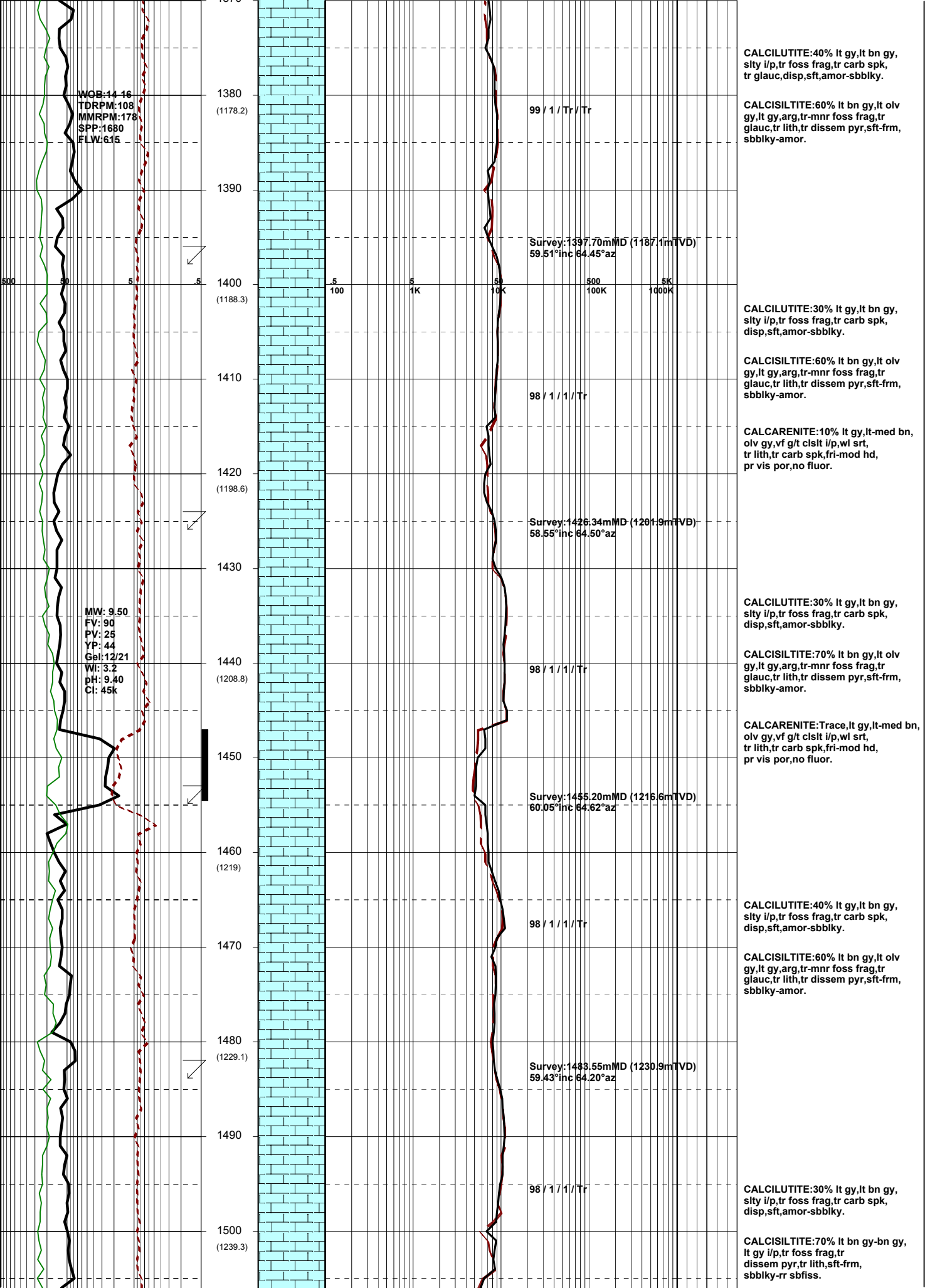
Survey: 1023.76mMD (948.5mTVD)
32.78°inc 87.31°az

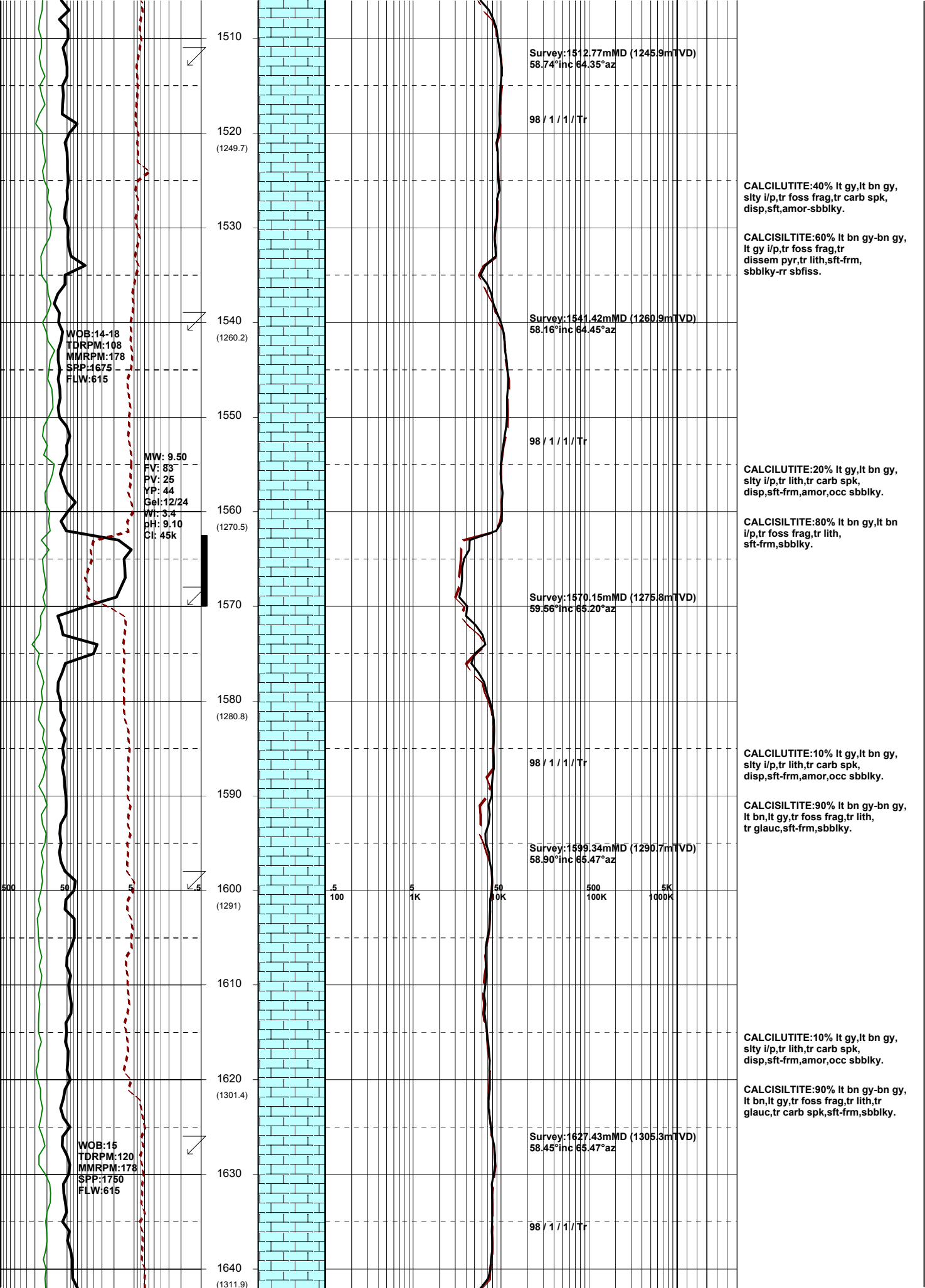
Survey: 1052.58mMD (972.4mTVD)
35.32°inc 81.50°az

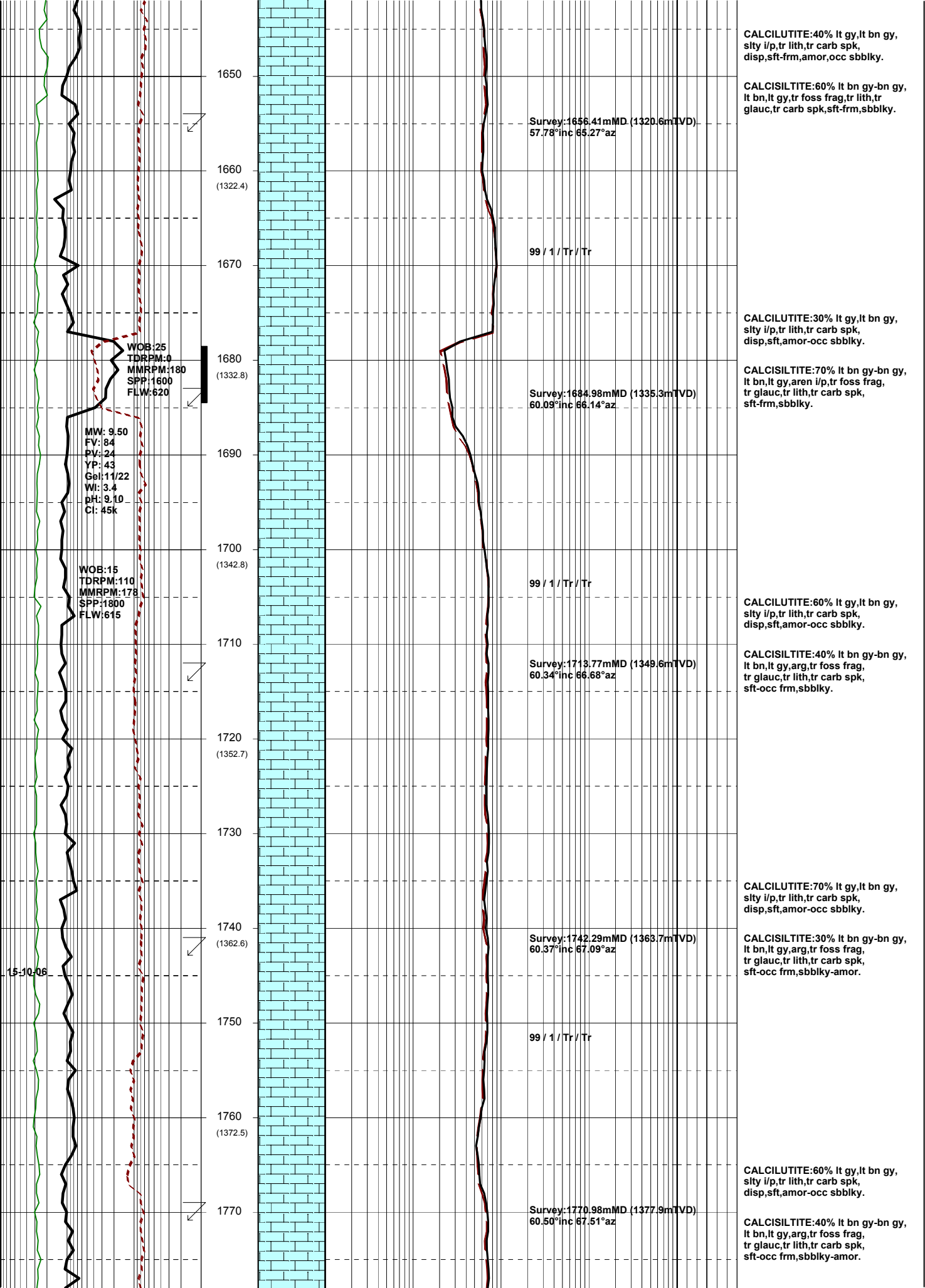
Survey: 1081.24mMD (995.4mTVD)
37.71°inc 77.55°az

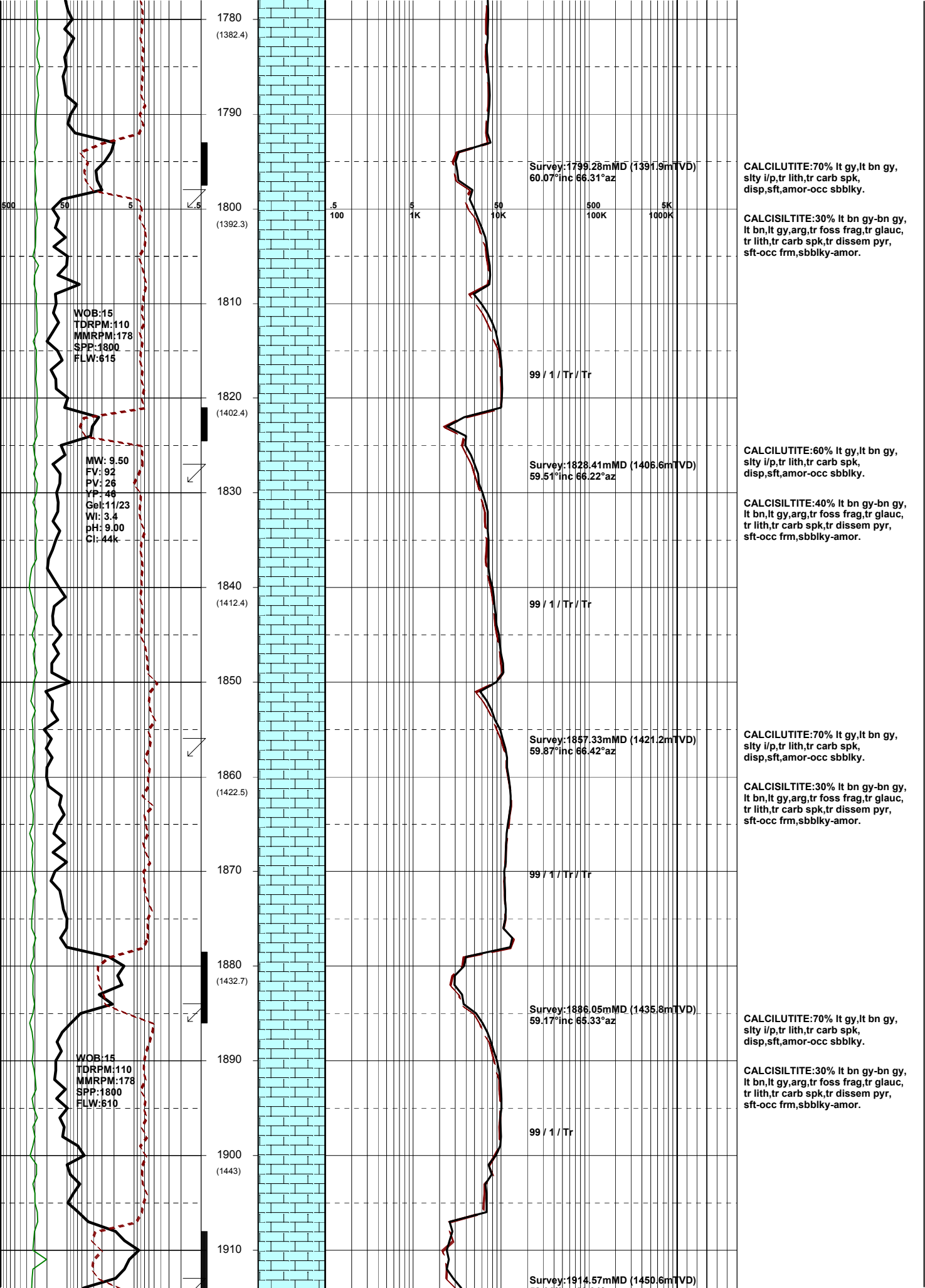


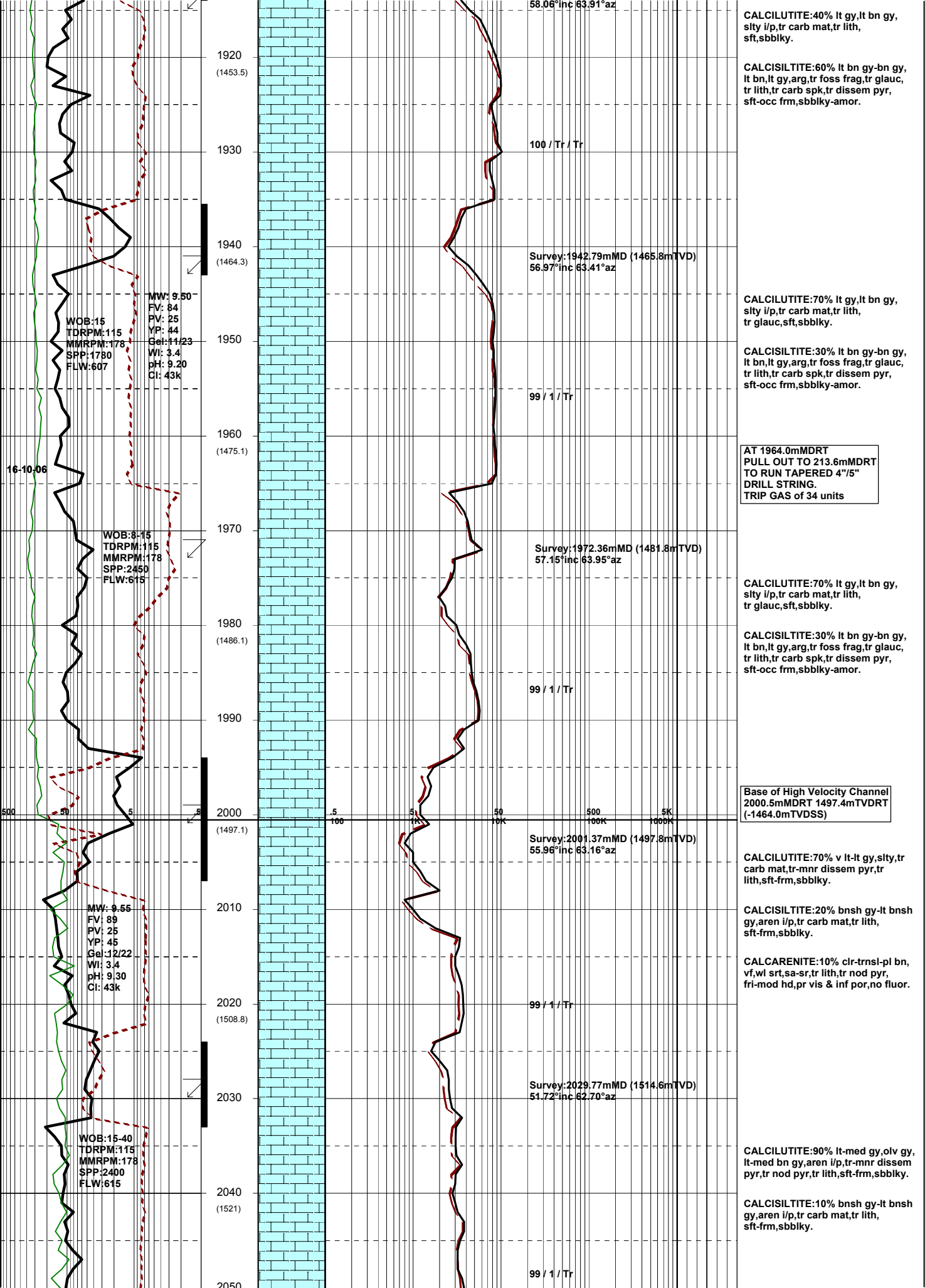


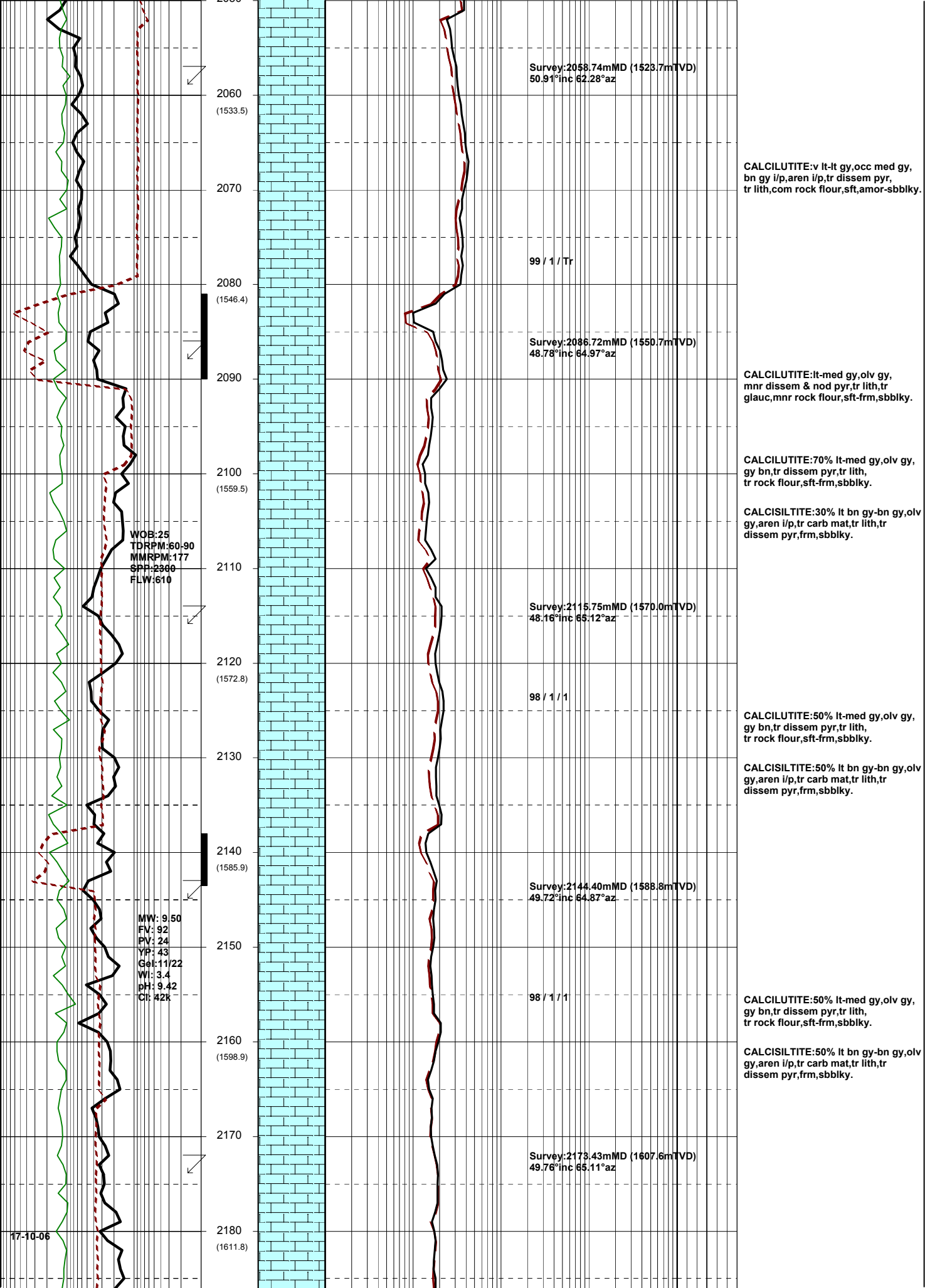












2050
(1533.5)

Survey:2058.74mMD (1523.7mTVD)
50.91°inc 62.28°az

CALCILUTITE:v lt-lt gy,occ med gy,
bn gy i/p,aren i/p,tr dissem pyr,
tr lith,com rock flour,sft,amor-sbbkly.

2070

99 / 1 / Tr

2080
(1546.4)

Survey:2086.72mMD (1550.7mTVD)
48.78°inc 64.97°az

CALCILUTITE:lt-med gy,olv gy,
mnr dissem & nod pyr,tr lith,tr
glauc,mnr rock flour,sft-frm,sbbkly.

2090

CALCILUTITE:70% lt-med gy,olv gy,
gy bn,tr dissem pyr,tr lith,
tr rock flour,sft-frm,sbbkly.

2100
(1559.5)

CALCISILTITE:30% lt bn gy-bn gy,olv
gy,aren i/p,tr carb mat,tr lith,tr
dissem pyr,frm,sbbkly.

WOB:25
TDRPM:60-90
MMRPM:177
SPP:2360
FLW:610

2110

Survey:2115.75mMD (1570.0mTVD)
48.16°inc 65.12°az

98 / 1 / 1

CALCILUTITE:50% lt-med gy,olv gy,
gy bn,tr dissem pyr,tr lith,
tr rock flour,sft-frm,sbbkly.

2120
(1572.8)

CALCISILTITE:50% lt bn gy-bn gy,olv
gy,aren i/p,tr carb mat,tr lith,tr
dissem pyr,frm,sbbkly.

2130

2140
(1585.9)

Survey:2144.40mMD (1588.8mTVD)
49.72°inc 64.87°az

98 / 1 / 1

CALCILUTITE:50% lt-med gy,olv gy,
gy bn,tr dissem pyr,tr lith,
tr rock flour,sft-frm,sbbkly.

MW: 9.50
FV: 92
PV: 24
YP: 43
Gel: 11/22
WI: 3.4
pH: 9.42
Cl: 42k

2150

CALCISILTITE:50% lt bn gy-bn gy,olv
gy,aren i/p,tr carb mat,tr lith,tr
dissem pyr,frm,sbbkly.

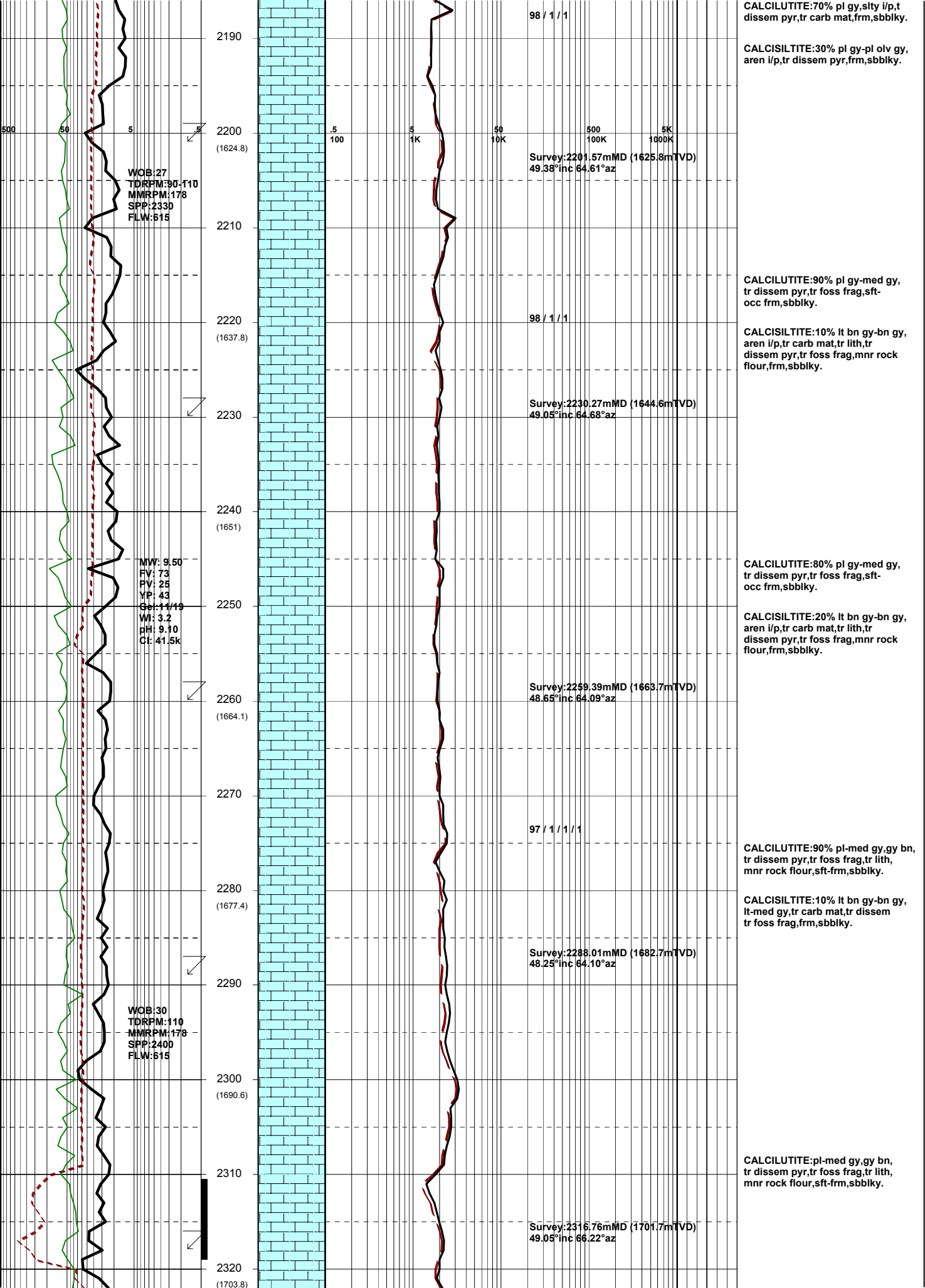
2160
(1598.9)

Survey:2173.43mMD (1607.6mTVD)
49.76°inc 65.11°az

2170

17-10-06

2180
(1611.8)



2190
2200 (1624.8)
2210
2220 (1637.8)
2230
2240 (1651)
2250
2260 (1664.1)
2270
2280 (1677.4)
2290
2300 (1690.6)
2310
2320 (1703.8)

WOB:27
TDRPM:90-110
MMRPM:178
SPP:2330
FLW:615

MW: 9.50
FV: 73
FY: 25
YP: 43
Gr: 11/19
WI: 3.2
pH: 9.10
Cl: 41.5k

WOB:30
TDRPM:110
MMRPM:178
SPP:2400
FLW:615

98 / 1 / 1

Survey:2201.57mMD (1625.8mTVD)
49.38°inc 64.61°az

98 / 1 / 1

Survey:2230.27mMD (1644.6mTVD)
49.05°inc 64.68°az

Survey:2259.39mMD (1663.7mTVD)
48.65°inc 64.09°az

97 / 1 / 1 / 1

Survey:2288.01mMD (1682.7mTVD)
48.25°inc 64.10°az

Survey:2316.76mMD (1701.7mTVD)
49.05°inc 66.22°az

CALCILUTITE:70% pl gy,slty i/p,t disse pyr,tr carb mat,frm,sbbiky.

CALCILUTITE:30% pl gy-pl olv gy, aren i/p,tr disse pyr,frm,sbbiky.

CALCILUTITE:90% pl gy-med gy, tr disse pyr,tr foss frag,sft-occ frm,sbbiky.

CALCILUTITE:10% lt bn gy-bn gy, aren i/p,tr carb mat,tr lith,tr disse pyr,tr foss frag,mnr rock flour,frm,sbbiky.

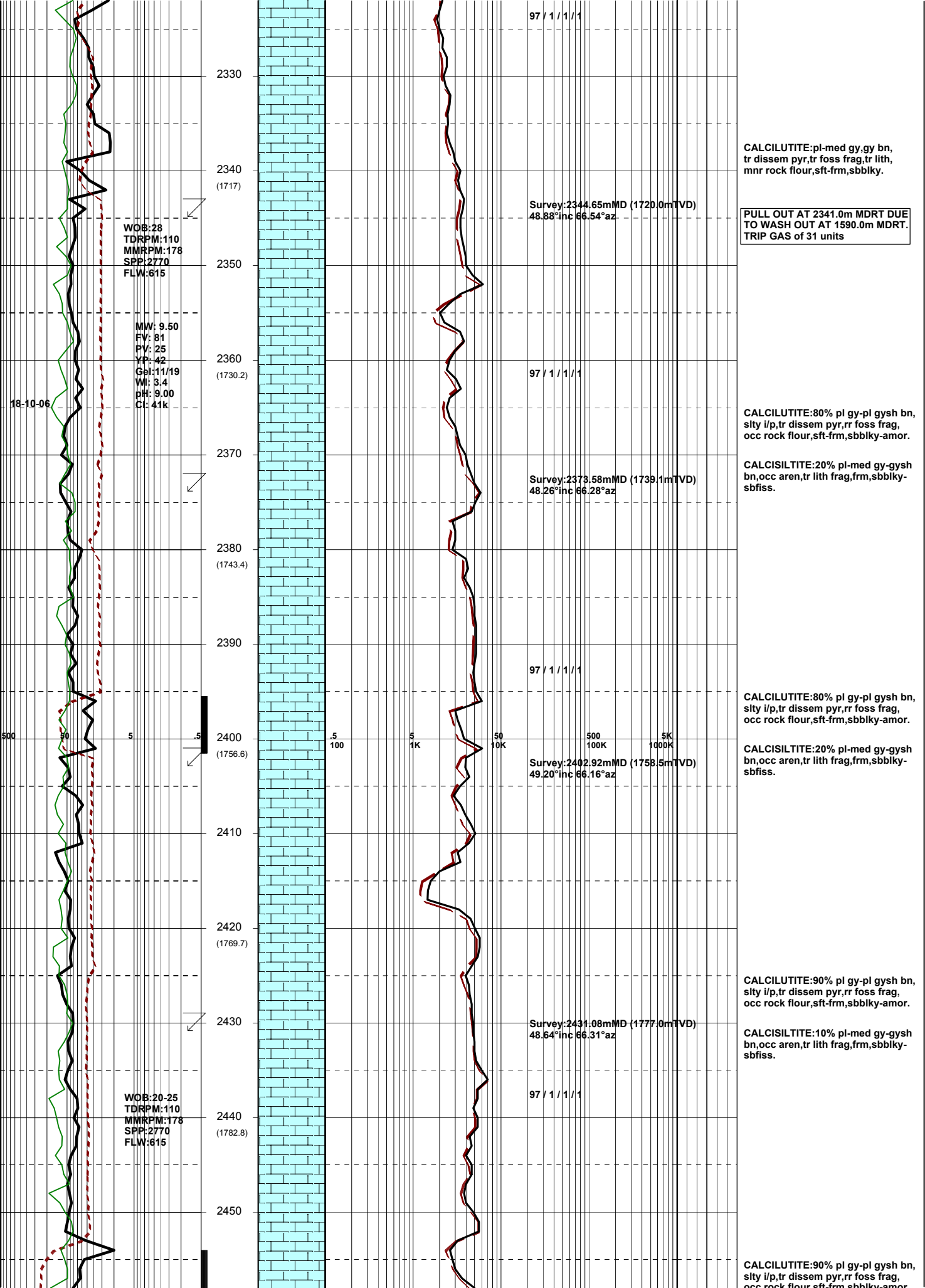
CALCILUTITE:80% pl gy-med gy, tr disse pyr,tr foss frag,sft-occ frm,sbbiky.

CALCILUTITE:20% lt bn gy-bn gy, aren i/p,tr carb mat,tr lith,tr disse pyr,tr foss frag,mnr rock flour,frm,sbbiky.

CALCILUTITE:90% pl-med gy,gy bn, tr disse pyr,tr foss frag,tr lith, mnr rock flour,sft-frm,sbbiky.

CALCILUTITE:10% lt bn gy-bn gy, lt-med gy,tr carb mat,tr disse tr foss frag,frm,sbbiky.

CALCILUTITE:pl-med gy,gy bn, tr disse pyr,tr foss frag,tr lith, mnr rock flour,sft-frm,sbbiky.



2330
 2340 (1717)
 2350
 2360 (1730.2)
 2370
 2380 (1743.4)
 2390
 2400 (1756.6)
 2410
 2420 (1769.7)
 2430
 2440 (1782.8)
 2450

WOB: 28
 TDRPM: 110
 MMRPM: 178
 SPP: 2770
 FLW: 615

MW: 9.50
 FV: 81
 PV: 25
 YP: 42
 Gel: 11/19
 WI: 3.4
 pH: 9.00
 Cl: 41k

18-10-06

97 / 1 / 1 / 1
 Survey: 2344.65mMD (1720.0mTVD)
 48.88° inc 66.54° az

97 / 1 / 1 / 1

Survey: 2373.58mMD (1739.1mTVD)
 48.26° inc 66.28° az

97 / 1 / 1 / 1

Survey: 2402.92mMD (1758.5mTVD)
 49.20° inc 66.16° az

Survey: 2431.08mMD (1777.0mTVD)
 48.64° inc 66.31° az

97 / 1 / 1 / 1

WOB: 20-25
 TDRPM: 110
 MMRPM: 178
 SPP: 2770
 FLW: 615

CALCILUTITE: pl-med gy, gy bn,
 tr disse pyr, tr foss frag, tr lith,
 mnr rock flour, sft frm, sbbiky.

PULL OUT AT 2341.0m MDRT DUE
 TO WASH OUT AT 1590.0m MDRT.
 TRIP GAS of 31 units

CALCILUTITE: 80% pl gy-pl gysh bn,
 silty i/p, tr disse pyr, rr foss frag,
 occ rock flour, sft frm, sbbiky-amor.

CALCILUTITE: 20% pl-med gy-gysh
 bn, occ aren, tr lith frag, frm, sbbiky-
 sbfiss.

CALCILUTITE: 80% pl gy-pl gysh bn,
 silty i/p, tr disse pyr, rr foss frag,
 occ rock flour, sft frm, sbbiky-amor.

CALCILUTITE: 20% pl-med gy-gysh
 bn, occ aren, tr lith frag, frm, sbbiky-
 sbfiss.

CALCILUTITE: 90% pl gy-pl gysh bn,
 silty i/p, tr disse pyr, rr foss frag,
 occ rock flour, sft frm, sbbiky-amor.

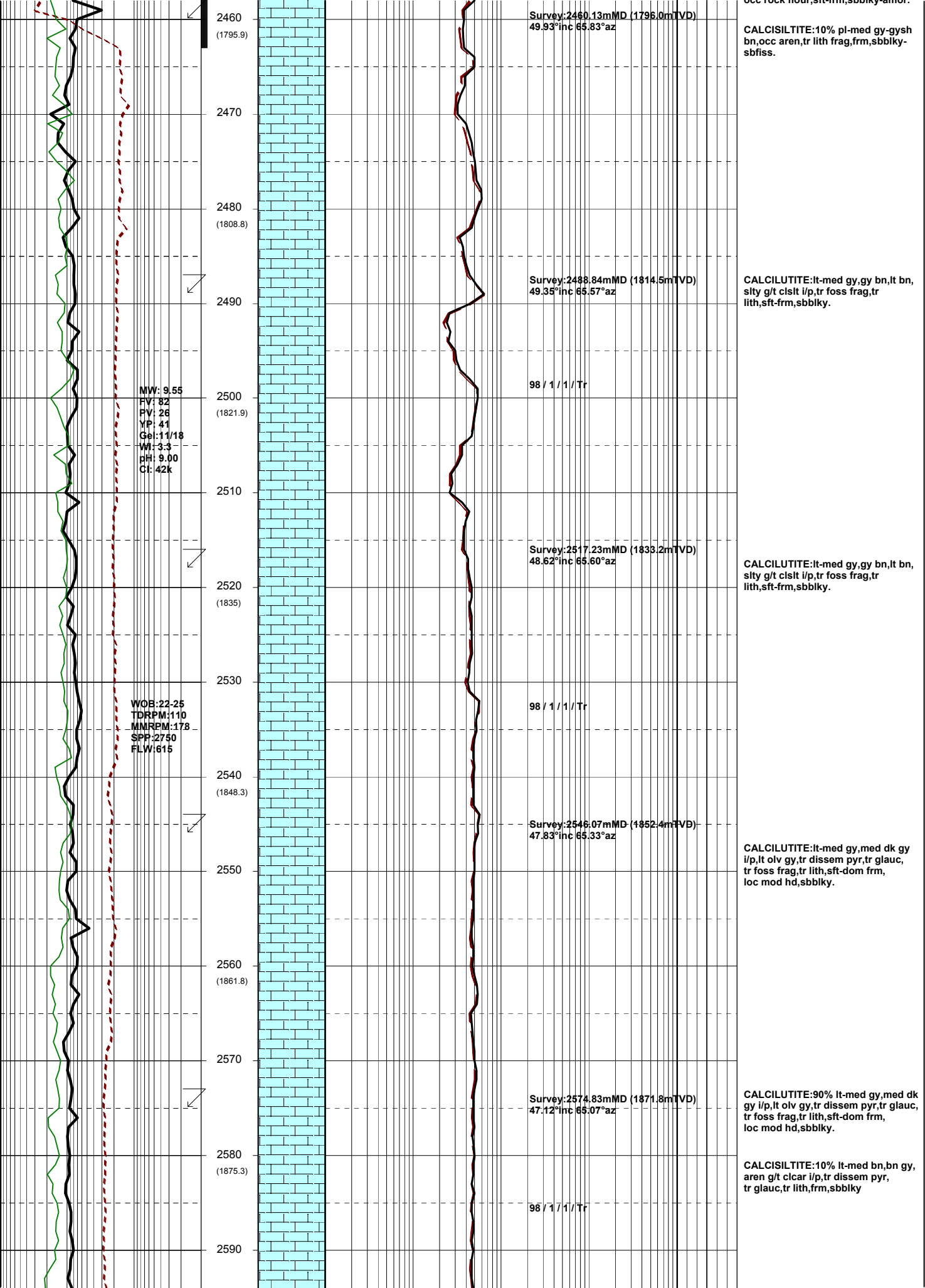
CALCILUTITE: 10% pl-med gy-gysh
 bn, occ aren, tr lith frag, frm, sbbiky-
 sbfiss.

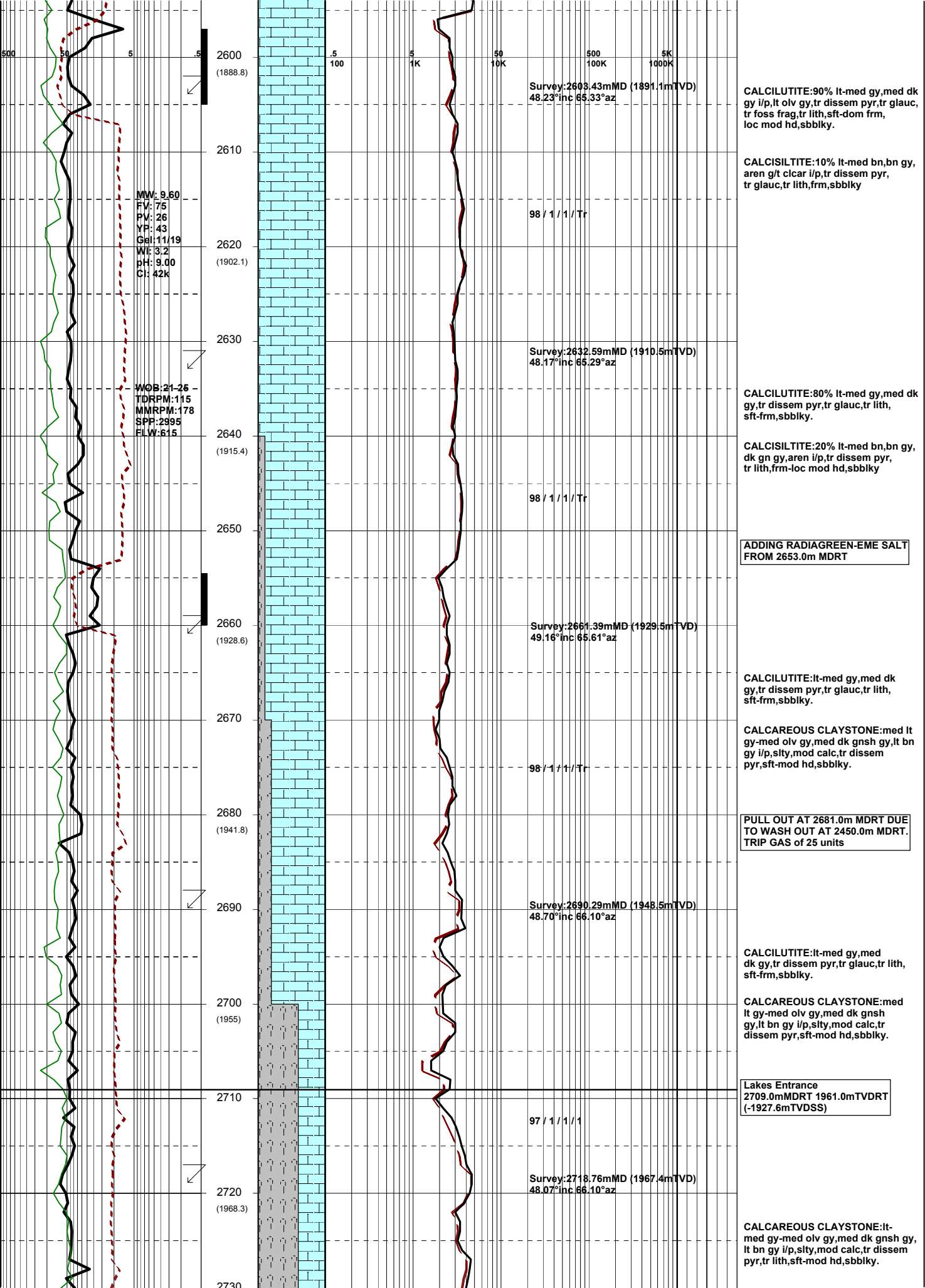
CALCILUTITE: 90% pl gy-pl gysh bn,
 silty i/p, tr disse pyr, rr foss frag,
 occ rock flour, sft frm, sbbiky-amor.

500
 50
 5

5
 5
 5

5 5 50 500 5K
 100 1K 10K 100K 1000K





CALCILUTITE:90% lt-med gy,med dk gy i/p,lt olv gy,tr dissem pyr,tr glauc, tr foss frag,tr lith,sft-dom frm, loc mod hd,sbbiky.

CALCISILTITE:10% lt-med bn,bn gy, aren g/t clear i/p,tr dissem pyr, tr glauc, tr lith,frm,sbbiky

MW: 9.60
FV: 75
PV: 26
YP: 43
Gel: 11.19
WIF: 3.2
pH: 9.00
Cl: 42k

WOB: 21-26
TDRPM: 115
MMRPM: 178
SPP: 2995
FLW: 615

ADDING RADIAGREEN-EME SALT FROM 2653.0m MDRT

CALCILUTITE:lt-med gy,med dk gy,tr dissem pyr,tr glauc, tr lith, sft-frm,sbbiky.

CALCAREOUS CLAYSTONE:med lt gy-med olv gy,med dk gnsh gy,lt bn gy i/p,sly,mod calc,tr dissem pyr,sft-mod hd,sbbiky.

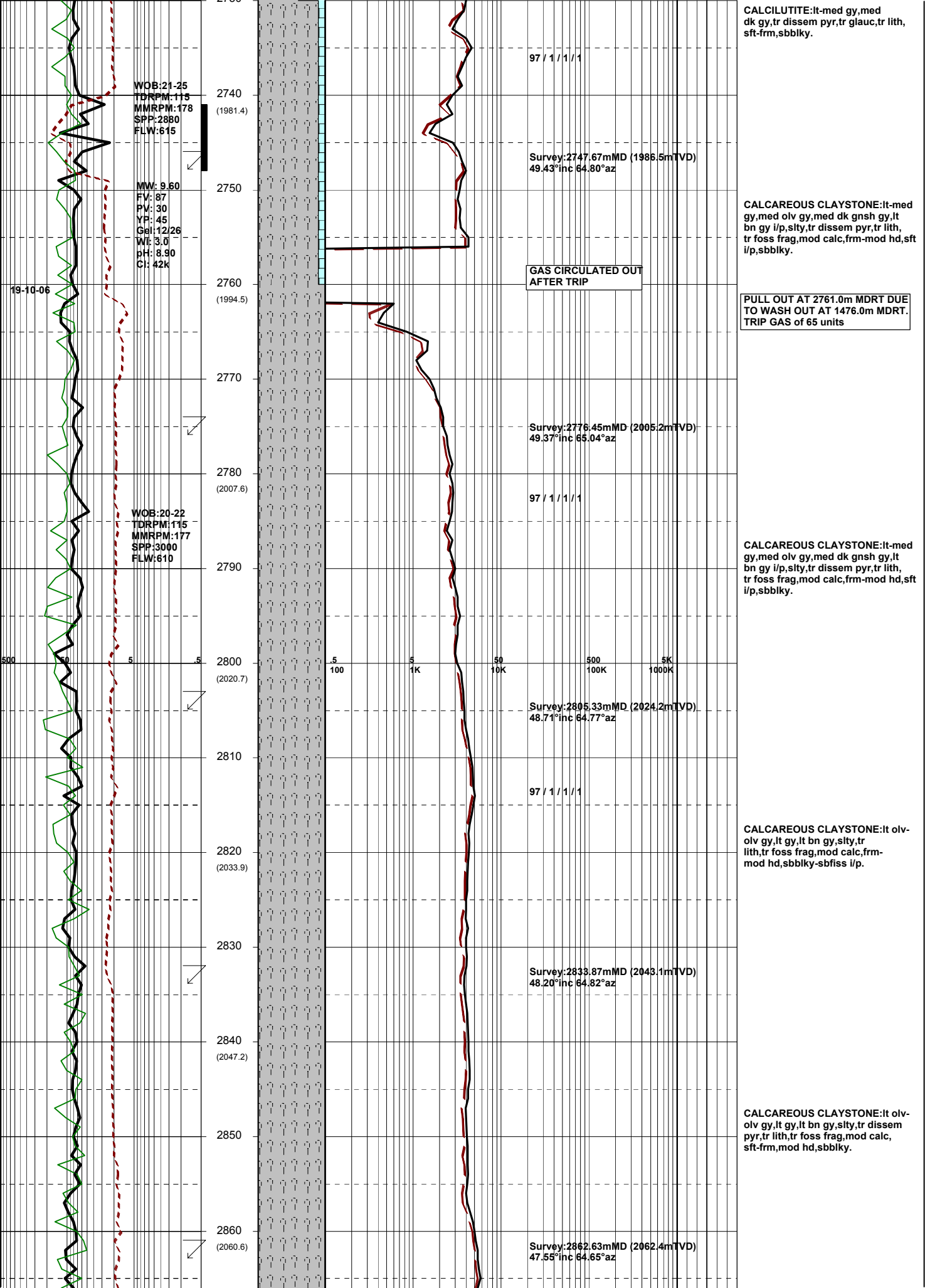
PULL OUT AT 2681.0m MDRT DUE TO WASH OUT AT 2450.0m MDRT. TRIP GAS of 25 units

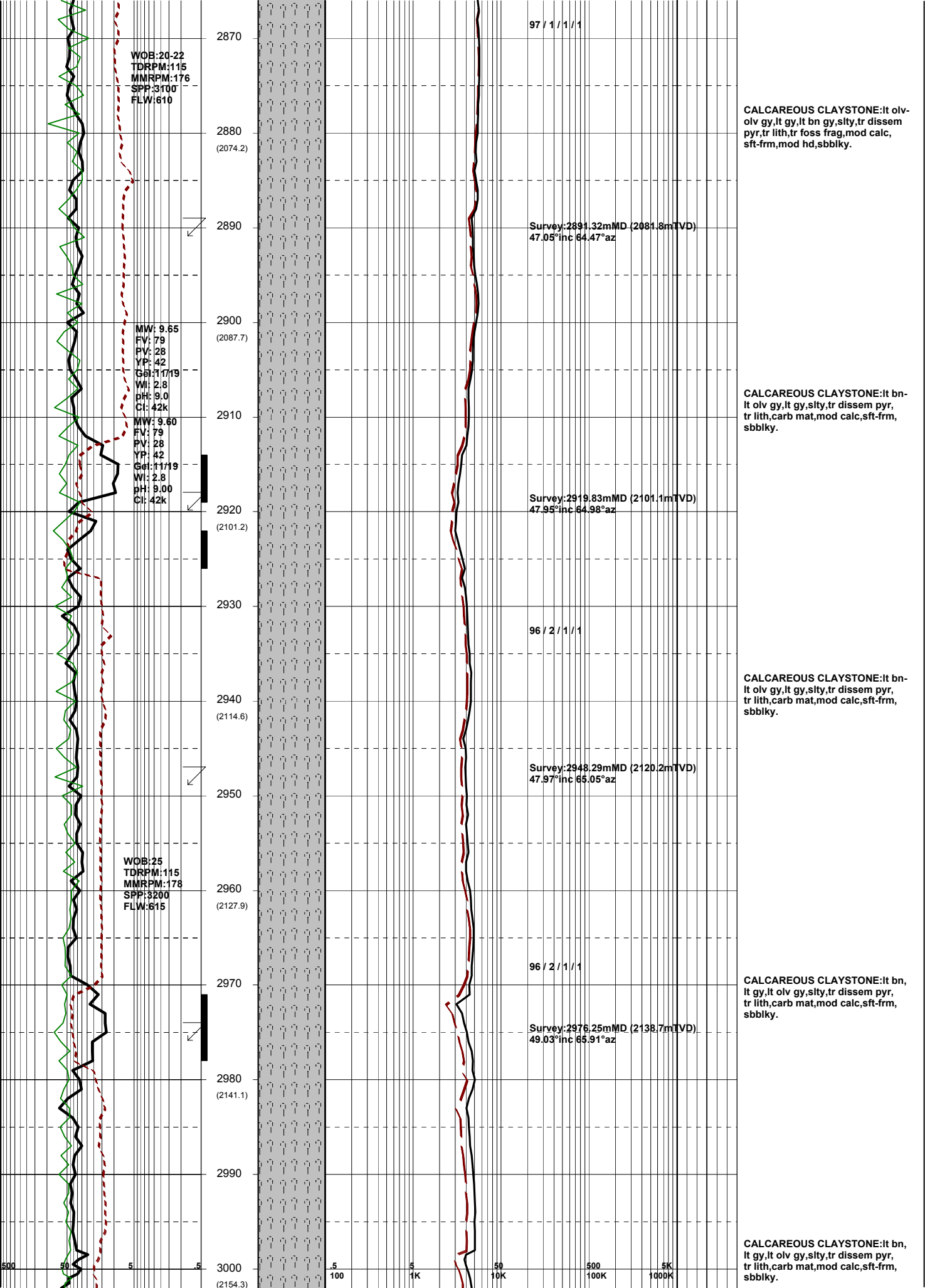
CALCILUTITE:lt-med gy,med dk gy,tr dissem pyr,tr glauc, tr lith, sft-frm,sbbiky.

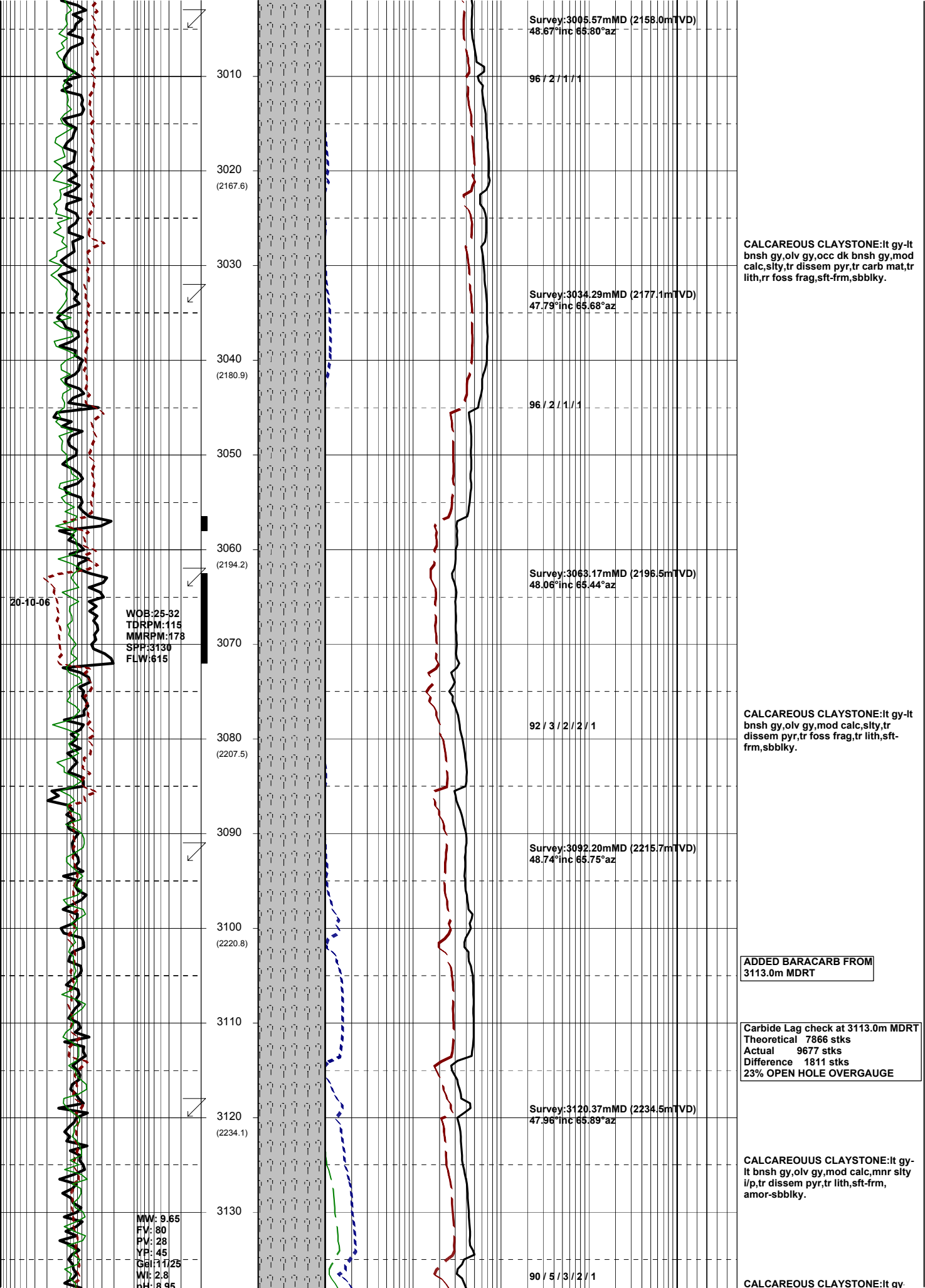
CALCAREOUS CLAYSTONE:med lt gy-med olv gy,med dk gnsh gy,lt bn gy i/p,sly,mod calc,tr dissem pyr,sft-mod hd,sbbiky.

Lakes Entrance
2709.0mMDRT 1961.0mTVDRT
(-1927.6mTVDSS)

CALCAREOUS CLAYSTONE:lt-med gy-med olv gy,med dk gnsh gy, lt bn gy i/p,sly,mod calc,tr dissem pyr, tr lith,sft-mod hd,sbbiky.







Survey:3005.57mMD (2158.0mTVD)
48.67°inc 65.80°az

3010

96 / 2 / 1 / 1

3020
(2167.6)

3030

Survey:3034.29mMD (2177.1mTVD)
47.79°inc 65.68°az

3040
(2180.9)

96 / 2 / 1 / 1

3050

3060
(2194.2)

Survey:3063.17mMD (2196.5mTVD)
48.06°inc 65.44°az

20-10-06
WOB: 25-32
TDRPM: 115
MMRPM: 178
SPP: 3130
FLW: 615

3070

92 / 3 / 2 / 2 / 1

3080
(2207.5)

Survey:3092.20mMD (2215.7mTVD)
48.74°inc 65.75°az

3090

3100
(2220.8)

ADDED BARACARB FROM
3113.0m MDRT

3110

Carbide Lag check at 3113.0m MDRT
Theoretical 7866 stks
Actual 9677 stks
Difference 1811 stks
23% OPEN HOLE OVERGAUGE

3120
(2234.1)

Survey:3120.37mMD (2234.5mTVD)
47.96°inc 65.89°az

3130

90 / 5 / 3 / 2 / 1

CALCAREOUS CLAYSTONE: It gy-lt bnsh gy, olv gy, mod calc, mnr slty i/p, tr disse pyr, tr lith, sft-frm, amor-sbbkly.

CALCAREOUS CLAYSTONE: It gy-lt

